



## Chrome suppressing the Realist export file

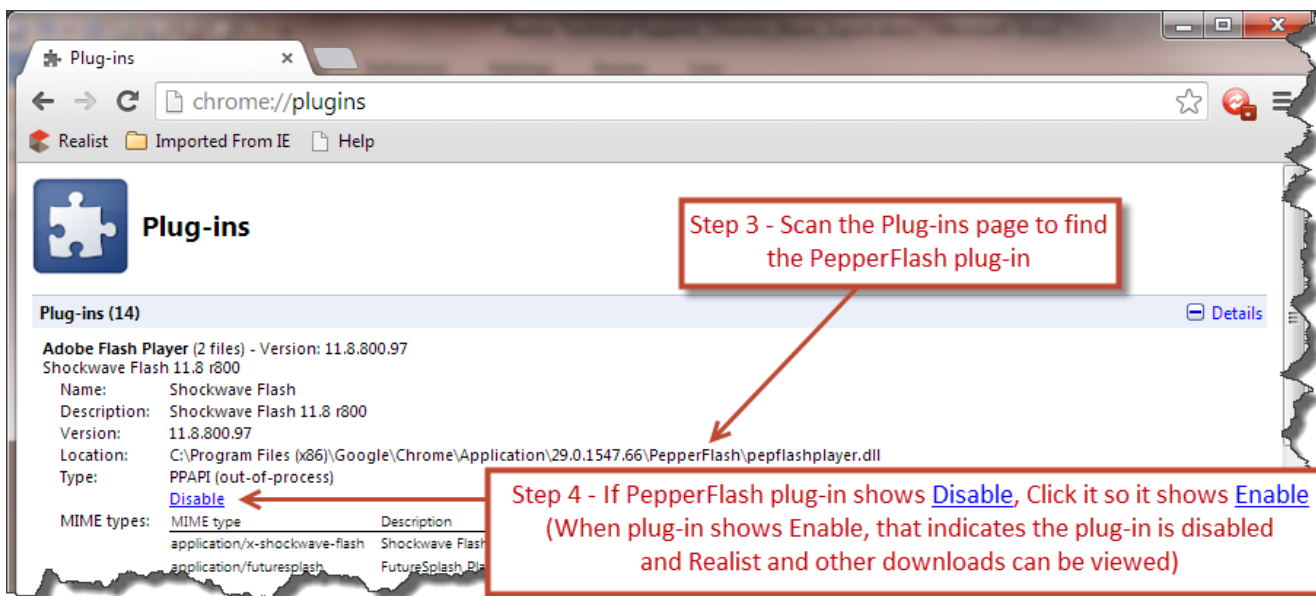
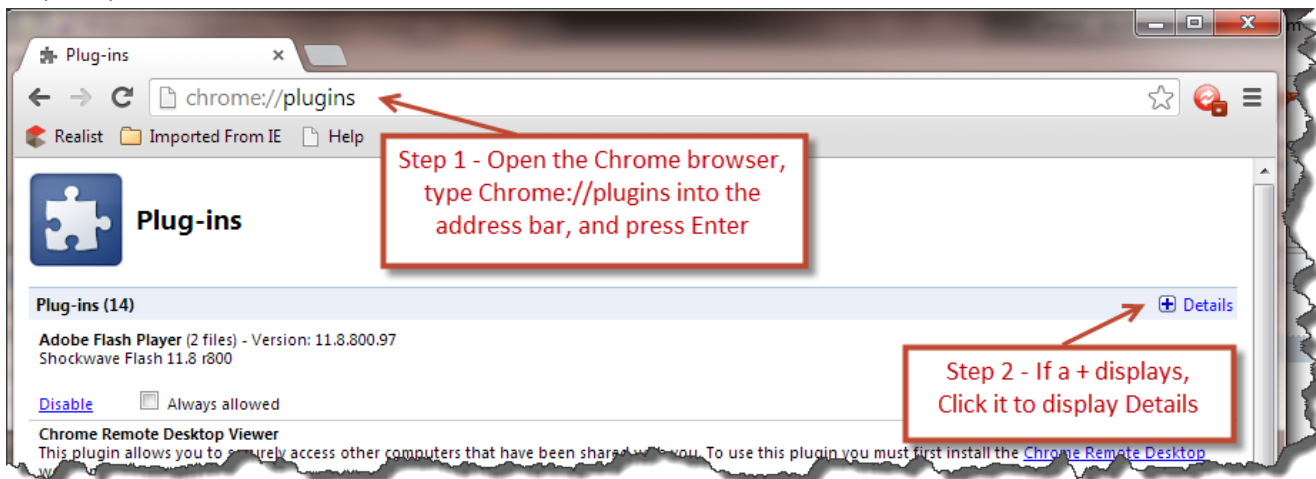
**Symptoms:** Chrome exports/labels and Assessor maps are rendering a white page.

**Cause:** A change in Browser behavior with Google's recent release of Chrome Version 29.0.1547.66 m

### Solution:

1. Start Chrome, type "chrome://plugins" into the Chrome address bar, and press enter.
2. If a plus sign appears on the right by Details click it to display all details.
3. Find the plug-in for PepperFlash.
4. Click the Disable option.

Once the PepperFlash plugin is disabled, Realist will use Adobe Flash. If you do not have Adobe Flash installed you may be prompted to install Adobe Flash.



**Note:** The screen area where the download option displays may be out of view if your display window is not maximized. Maximize the Browser window so it fits the size of the monitor completely to ensure the bottom is not hidden.

